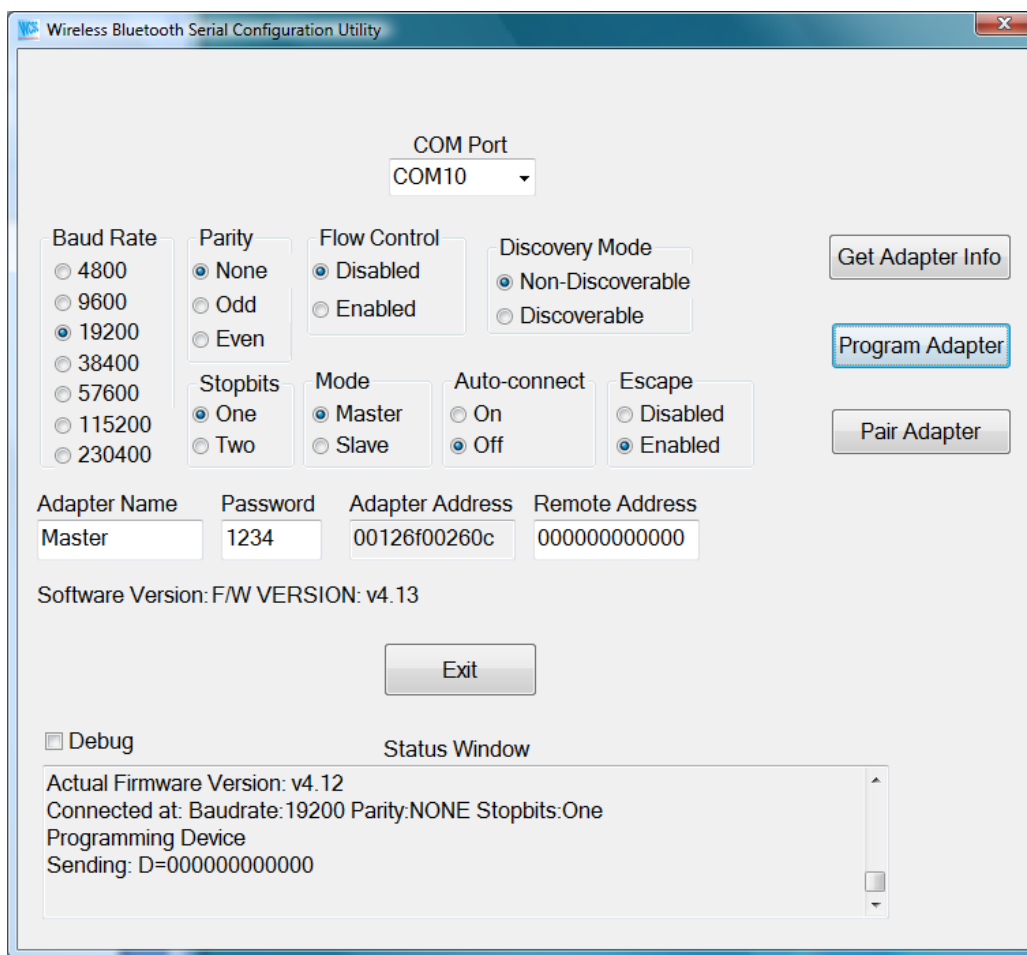


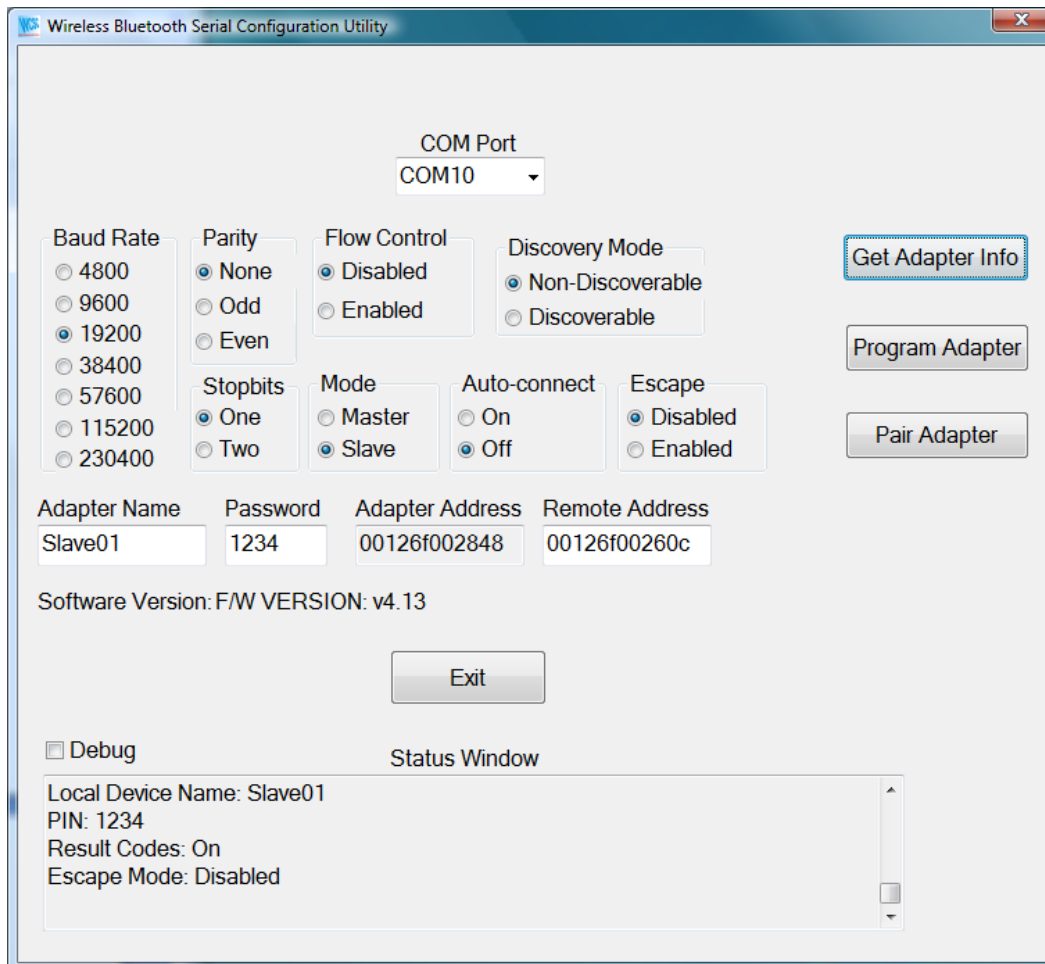
Configuring Master Wireless Serial Adapter To Connect/Disconnect From One Or More Slave Wireless Serial Adapter.

1. Download configuration utility of the wireless adapter at <http://www.wcscnet.com/Products/HdwBTRS232/ConfigBTRS232Setup.msi> and install.
2. Find the program group **WCSC Wireless Adapter Configuration** and click on the application **Configuration Utility (GUI)**. The following application will launch.



3. Make sure at all times during this process that only one wireless serial adapter is powered up to prevent them from connecting prematurely which could prevent programming.
4. Connect the wireless serial adapter that will be the master to the serial port on the computer.
5. Set the utility to the COM port that the adapter is plugged into.
6. Click on **Get Adapter Info**.

7. Change items to mimic the parameters in the utility above. Make the baud rate your required baud rate. Give the device your desired name. Copy the **Adapter Address** as you will need to enter this address as the remote address for every one of the slave adapters.
8. Click on **Program Adapter** to program the device.
9. Remove the wireless adapter from the serial port.
10. Connect the wireless adapter that will be a slave to the serial port on the computer.
11. Click on **Get Adapter Info**.



Wireless Bluetooth Serial Configuration Utility

COM Port
COM10

Baud Rate
 4800
 9600
 19200
 38400
 57600
 115200
 230400

Parity
 None
 Odd
 Even

Flow Control
 Disabled
 Enabled

Discovery Mode
 Non-Discoverable
 Discoverable

Stopbits
 One
 Two

Mode
 Master
 Slave

Auto-connect
 On
 Off

Escape
 Disabled
 Enabled

Adapter Name: Slave01
 Password: 1234
 Adapter Address: 00126f002848
 Remote Address: 00126f00260c

Software Version: F/W VERSION: v4.13

Exit

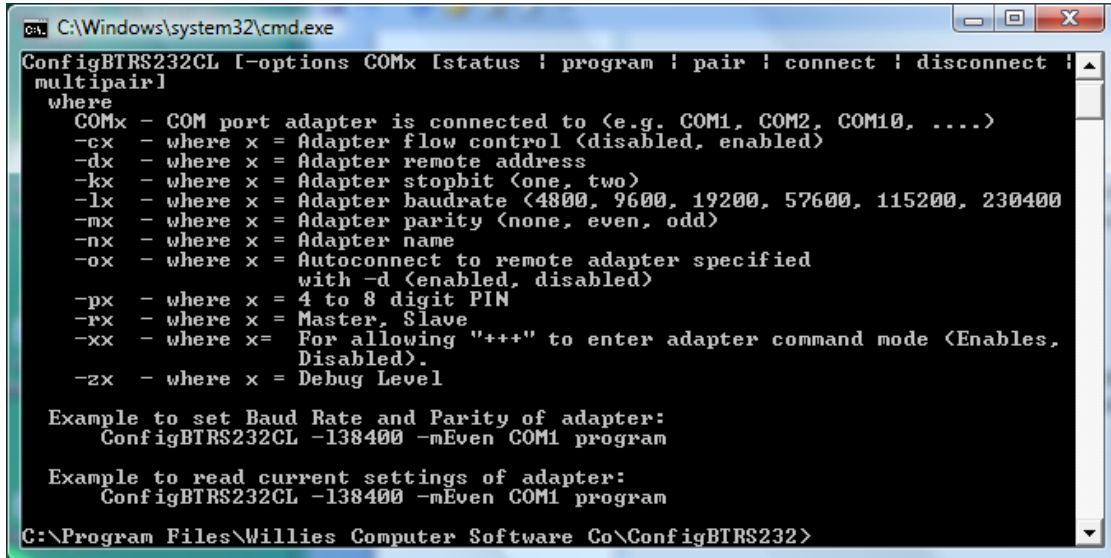
Debug

Status Window

Local Device Name: Slave01
 PIN: 1234
 Result Codes: On
 Escape Mode: Disabled

12. Change items to mimic the parameters in the utility above. Make the baud rate your required baud rate. Give the device your desired name. Replace the **Remote Address** with the address of the master wireless serial adapter that you saved in step (7).
13. Write down the **Adapter Address** as it will be needed when connecting the master wireless serial adapter to individual slaves.
14. Click on **Program Adapter** to program the device.
15. Repeat steps (9) through (15) for each slave.

16. The devices are now programmed to support one master and any number of slaves. The utility in Step (17) may be used to connect the master to a particular slave. The slave address that was saved in Step (13) for each slave wireless serial adapter will be used to connect the master wireless adapter to the particular slave wireless adapter.
17. Find the program group **WCSC Wireless Adapter Configuration** and click on the application **Configuration Utility (Command Line)**. The following application will launch.



```

C:\Windows\system32\cmd.exe
ConfigBTRS232CL [-options COMx [status ; program ; pair ; connect ; disconnect ;
multipair]
where
COMx - COM port adapter is connected to (e.g. COM1, COM2, COM10, ....)
-cx - where x = Adapter flow control (disabled, enabled)
-dx - where x = Adapter remote address
-kx - where x = Adapter stopbit (one, two)
-lx - where x = Adapter baudrate (4800, 9600, 19200, 57600, 115200, 230400)
-mx - where x = Adapter parity (none, even, odd)
-nx - where x = Adapter name
-ox - where x = Autoconnect to remote adapter specified
with -d (enabled, disabled)
-px - where x = 4 to 8 digit PIN
-rx - where x = Master, Slave
-xx - where x= For allowing "+++" to enter adapter command mode (Enables,
Disabled).
-zx - where x = Debug Level

Example to set Baud Rate and Parity of adapter:
ConfigBTRS232CL -138400 -mEven COM1 program

Example to read current settings of adapter:
ConfigBTRS232CL -138400 -mEven COM1 program

C:\Program Files\Willies Computer Software Co\ConfigBTRS232>

```

18. To connect the adapter use the address of the adapter you want to connect to as the `-d` option as illustrated below. The syntax to connect follows.

Connect Syntax:

ConfigBTRS232CL -d<Adapter Address> COMPort connect

Example:

ConfigBTRS232CL -d00126f002848 COM10 connect

The blue light will be solid on both the master wireless adapter and the specific slave wireless adapter that are connected (paired together).



Professional Software Development and Technical Support by Knowledgeable Engineers

19. To disconnect from the adapter follow what is illustrated below. The syntax to disconnect follows.

Connect Syntax:

ConfigBTRS232CL COMPort disconnect

Example:

ConfigBTRS232CL COM10 disconnect